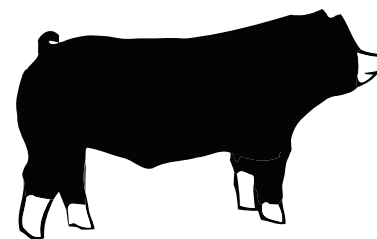
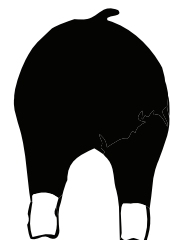


**IDEAL**

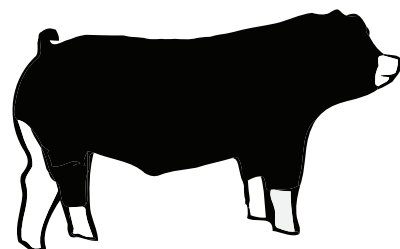
1. Predominantly black possessing Poland China breed character.
2. A Poland China should have six white points: nose, each leg/foot and at the end of the tail (unless tail is docked).
3. Ears are down when hog is in a relaxed position.



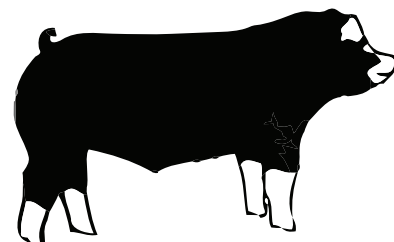
IDEAL



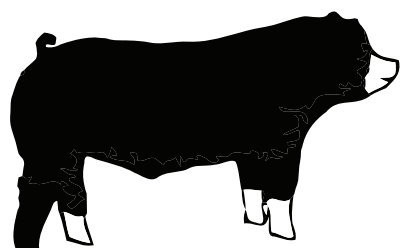
**ACCEPTABLE:**



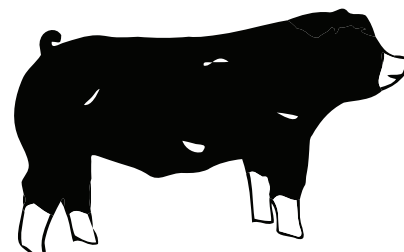
A SLIGHT CONTINUATION OF WHITE FROM THE LEGS TO THE BODY



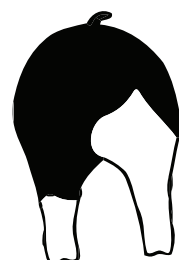
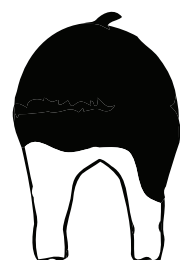
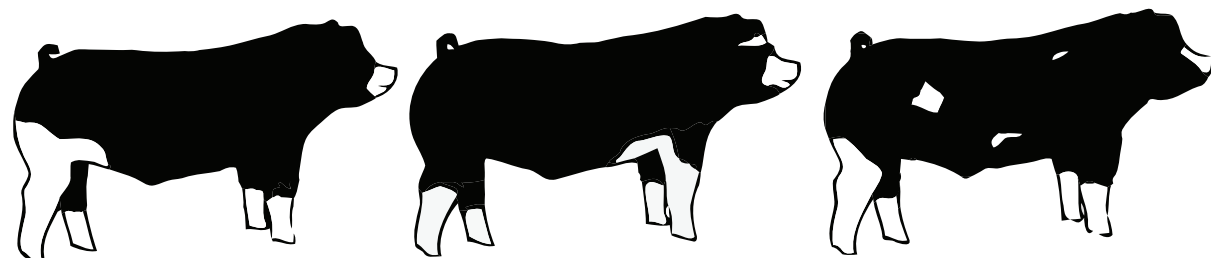
EAR MAY HAVE WHITE ON IT



THREE OF THE FOUR LEGS MUST BE WHITE



MAY HAVE AN OCCASIONAL SPLASH OF WHITE ON THE BODY

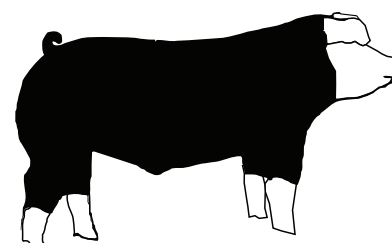


**ACCEPTABLE**

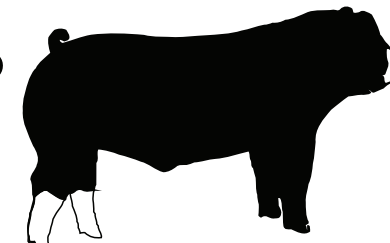
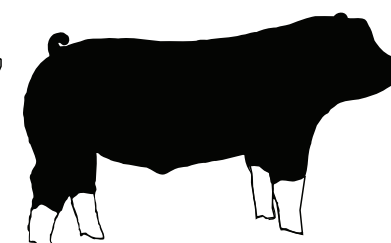
1. A slight continuation of white from the legs to the body
2. Ear may have white on it.
3. Three of the four legs must be white.
4. Hair and skin texture can vary from coarse to thin, and color can vary from dark black to ashy/pale.
5. Ear deformity/ear folded in a backwards position towards hog's body (crinkled ear).

**ABSOLUTE DISQUALIFICATIONS**

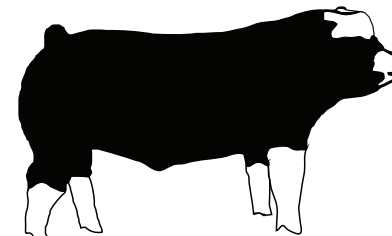
1. Erect ears
2. Solid white or solid black face
3. More than one solid black leg
4. If the white on a solid white ear goes past the base of the ear
5. An excessive continuation of white from the legs, encompassing the upper hip or shoulder
6. Excessive freestanding white, not attached to a leg
7. Evidence of belt formation
8. Red or sandy hair
9. Any evidence of physical tampering that would alter breed characteristics.
10. Ringneck -white totally encircling the neck



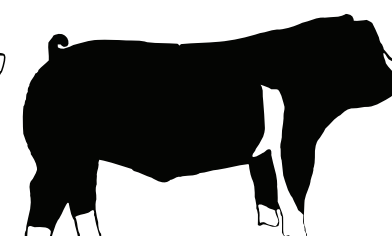
SOLID WHITE OR SOLID BLACK FACE



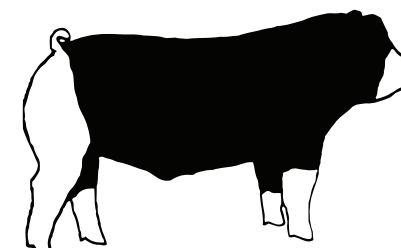
MORE THAN ONE SOLID BLACK LEG



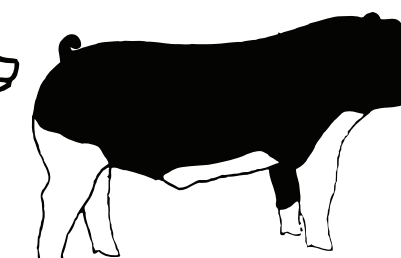
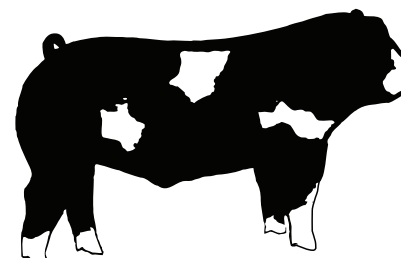
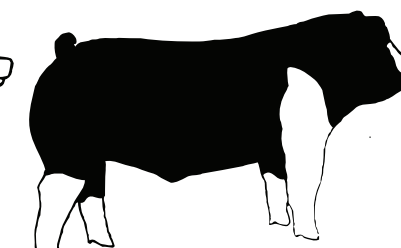
WHITE ON A SOLID WHITE EAR THAT GOES PAST THE BASE OF THE EAR



EVIDENCE OF BELT FORMATION



AN EXCESSIVE CONTINUATION OF WHITE FROM THE LEGS, ENCOMPASSING THE UPPER HIP OR SHOULDER



EXCESSIVE FREESTANDING WHITE, NOT ATTACHED TO A LEG

